

JKM-460N-48HL4M-DB 10 panelen 460WP
 10x460W=4600WP
 I_{sc}:15.76A
 V_{oc}:36.40V

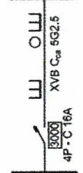


Solarkabel Cca 2,6mm²

Merk: Huawei
 Type: SUN2000-5KTL-M1
 S/N: TA2560173413
 D.C. Max input Voltage: 1100V
 I_{sc} PV: 19.5A
 A.C. Output Rated Power: 5KVA
 A.C. Output Max Current: 8.5A



XVB C_{ca} 6G2.5



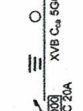
4P-C 16A



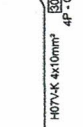
XVB C_{ca} 566



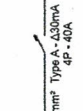
XVB C_{ca} 566



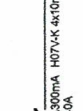
4P-C 20A



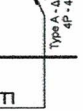
Type A - 430mA H07V-K 4x10mm²



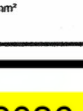
Type A - 430mA H07V-K 4x10mm²



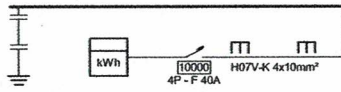
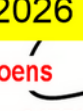
4P - 40A



10000 H07V-K 4x10mm²



4P - F 40A



OCB Jurgen Moens
 21/01/2026
 jurgens.moens@ocb.be 0475/45.23.82

Plaats van de elektrische installatie
 Brielstraat 22
 9400 Ninove
 EAN 541448860018360121

Installateur
 B-Climatics bv
 Poelkvelstraat 55
 1760 Roosdaal
 GSM: +32 494 93 91 70
 e-mail: dieter@b-climatics.be
 BE 0753.784.723

p. 1/1
 Eendraadschema
 3 x 400V + N ~ 50Hz